



MODEL T10035/T10036 STEEL/ALUMINUM JACKS INSTRUCTION SHEET

T10035 Specifications

Maximum Lifting Capacity3,000 lbs.
Lifting Range3½"–15½"
Weight35 lbs.

T10036 Specifications

Maximum Lifting Capacity5,000 lbs.
Lifting Range4"–18½"
Weight58 lbs.

Assembly

Attach the upper handle to the lower handle so that the release button clicks. Insert the handle into the handle socket. Tighten the knurled thumb screw.

Operation

To raise the saddle:

Turn the handle clockwise as far as it will turn and pump the handle up and down. Turning the handle clockwise will close the release valve.

To lower the saddle:

Slowly turn the jack handle counterclockwise.

If you need help with the Model T10035 or T10036, call our Technical Support line at: (570) 546-9663.

WARNING

To reduce the risk of death, serious personal injury or property damage when using these jacks:

- DO NOT overload this jack beyond its rated capacity. Overloading may result in personal injury or property damage.
- ALWAYS support the vehicle with appropriately rated support stands before working under it.
- DO NOT attempt to move the vehicle while the jack is in use.
- ONLY use this jack on a hard level surface capable of sustaining the load being supported.
- Always make sure that vehicle load points are centered in the saddle to maintain proper balance and stability.
- DO NOT use jack if it begins leaking fluid or if it sinks when placed under load. These are indications that the jack needs to be immediately serviced.
- Only use the jack at appropriate areas of the vehicle that can safely support the vehicle's weight.

Maintenance

Keep the hydraulic ram clean and free of any dust, dirt, or foreign debris. Abrasive material stuck to the ram can damage the hydraulic seal when the ram is retracted back into the jack. Regularly wipe the hydraulic ram clean with a lightly oiled rag.

The jack will require hydraulic fluid after long-term use. This will be noticeable if the jack will not reach its maximum height when pumped. Only use a high quality hydraulic fluid.

To add hydraulic fluid:

1. Completely lower the jack saddle.
2. Remove the fill plug shown in **Figure 1**.

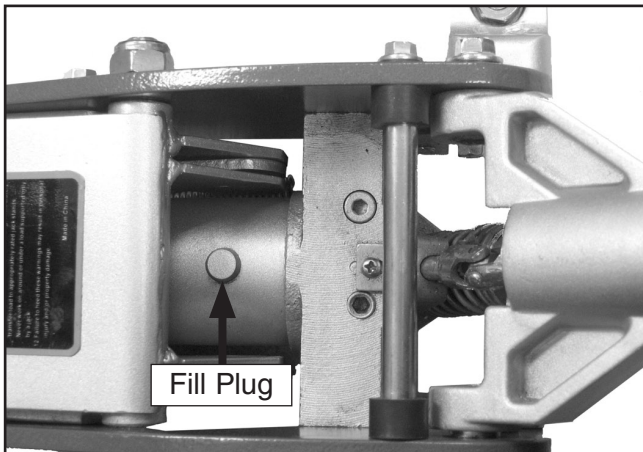


Figure 1. Fill plug.

3. Add fluid until it reaches the top of the fill plug hole.
4. Replace the fill plug.
5. Test the operation of the jack by pumping it up to the maximum height and applying a load to the saddle. The jack should hold the weight of the load without a sinking or spongy feeling.

—If the jack did not perform properly, then air may need to be bled from the pump system.

Bleeding the Air

If the jack becomes spongy or will not rise when pumped, then air bubbles may be in the hydraulic system. These air bubbles must be bled from the hydraulic fluid before the jack can be safely operated.

To remove the air bubbles:

1. Rotate the handle counterclockwise five full turns.
2. Place a shop rag around and under the oil fill hole.
3. Remove the fill plug.
4. Pump the jack handle rapidly to force the air bubbles out through the fill hole. When the air bubbles stop coming out, add fluid as needed, then reinstall the fill plug.

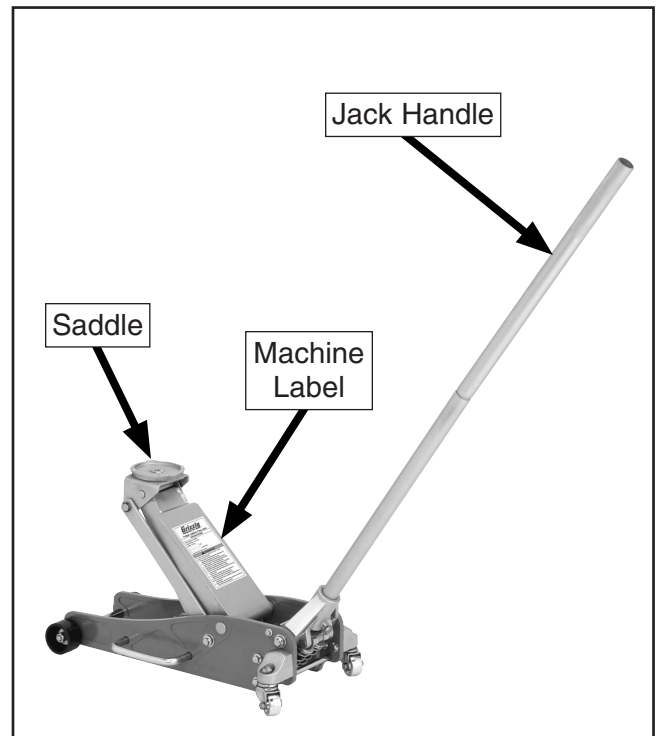
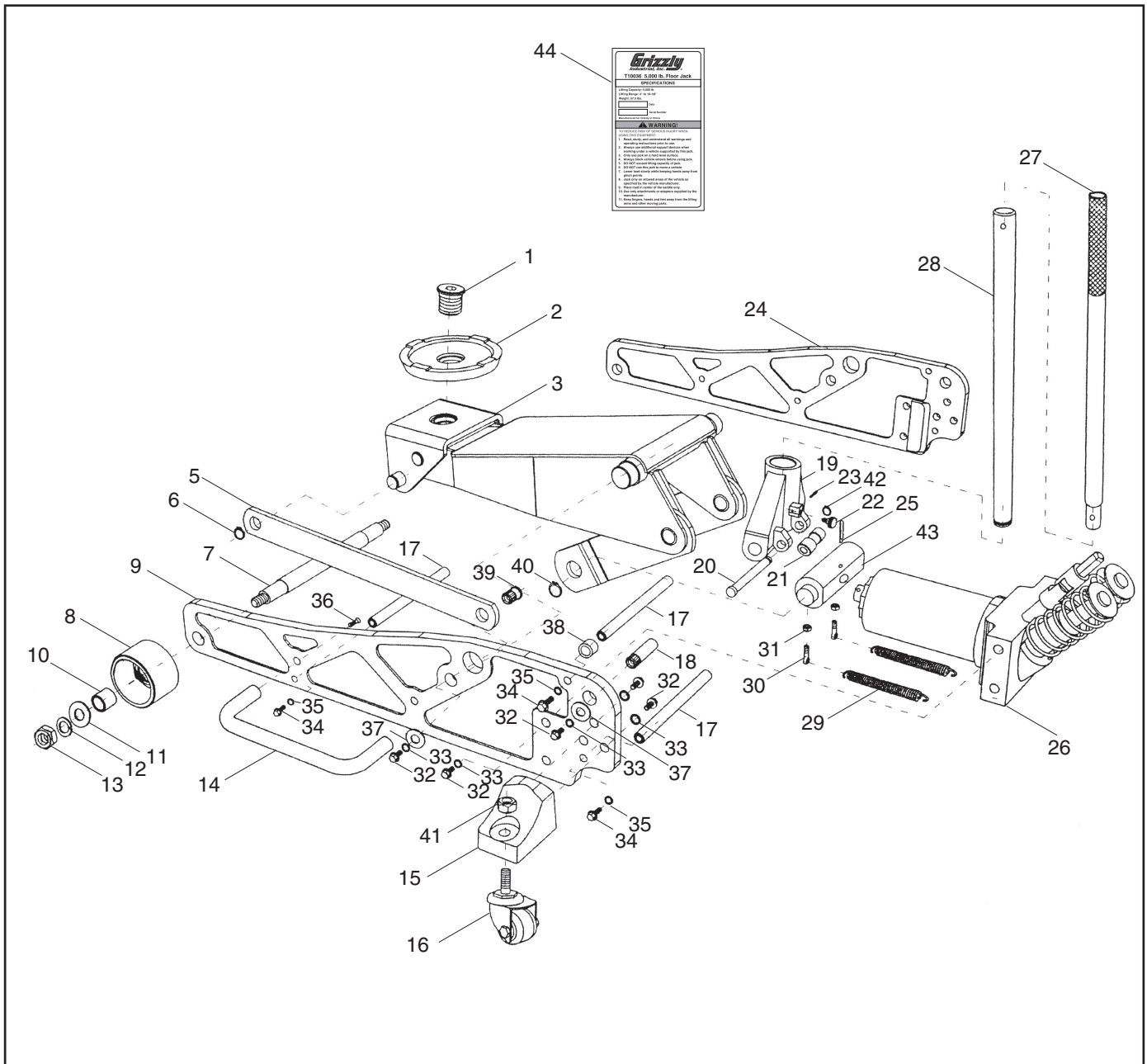


Figure 2. Identification.

T10036 Main Parts Breakdown



⚠️ WARNING

The machine label warns about hazards and ways to prevent injury. The owner of the jack **MUST** maintain the original location and readability of the label. If the label is removed or becomes unreadable, contact Grizzly at (800) 523-4777 or www.grizzly.com to order a new label.

T10035 Main Parts List

| REF | PART # | DESCRIPTION |
|-----|------------|-----------------------------|
| 1 | PT10035001 | RUBBER PAD |
| 2 | PT10035002 | SADDLE AXIS |
| 3 | PT10035003 | SADDLE |
| 4 | PT10035004 | LIFTING ARM |
| 5 | PT10035005 | LIFT ARM AXIS |
| 6 | PT10035006 | LINKAGE (LONG) |
| 7 | PR03M | EXT RETAINING RING 12MM |
| 8 | PT10035008 | FRONT WHEEL AXIS |
| 9 | PT10035009 | FRONT WHEEL ASSEMBLY |
| 10 | PT10035010 | WALL PLATE |
| 11 | PTLW16M | INT TOOTH WASHER 10MM |
| 12 | PFB24M | FLANGE BOLT M10-1.5 X 16 |
| 13 | PT10035013 | SIDE HANDLE |
| 14 | PFH59M | FLAT HD ALLEN SCR M6-1 X 20 |
| 15 | PW01M | FLAT WASHER 8MM |
| 16 | PTLW03M | INT TOOTH WASHER 8MM |
| 17 | PFB18M | FLANGE BOLT M8-1.25 X 20 |
| 18 | PLN11M | LOCK NUT M14-2 |
| 19 | PN02M | HEX NUT M10-1.5 |
| 20 | PT10035020 | REAR CASTER BRACKET |
| 21 | PT10035021 | REAR CASTER ASSEMBLY |
| 22 | PFB23M | FLANGE BOLT M10-1.5 X 20 |

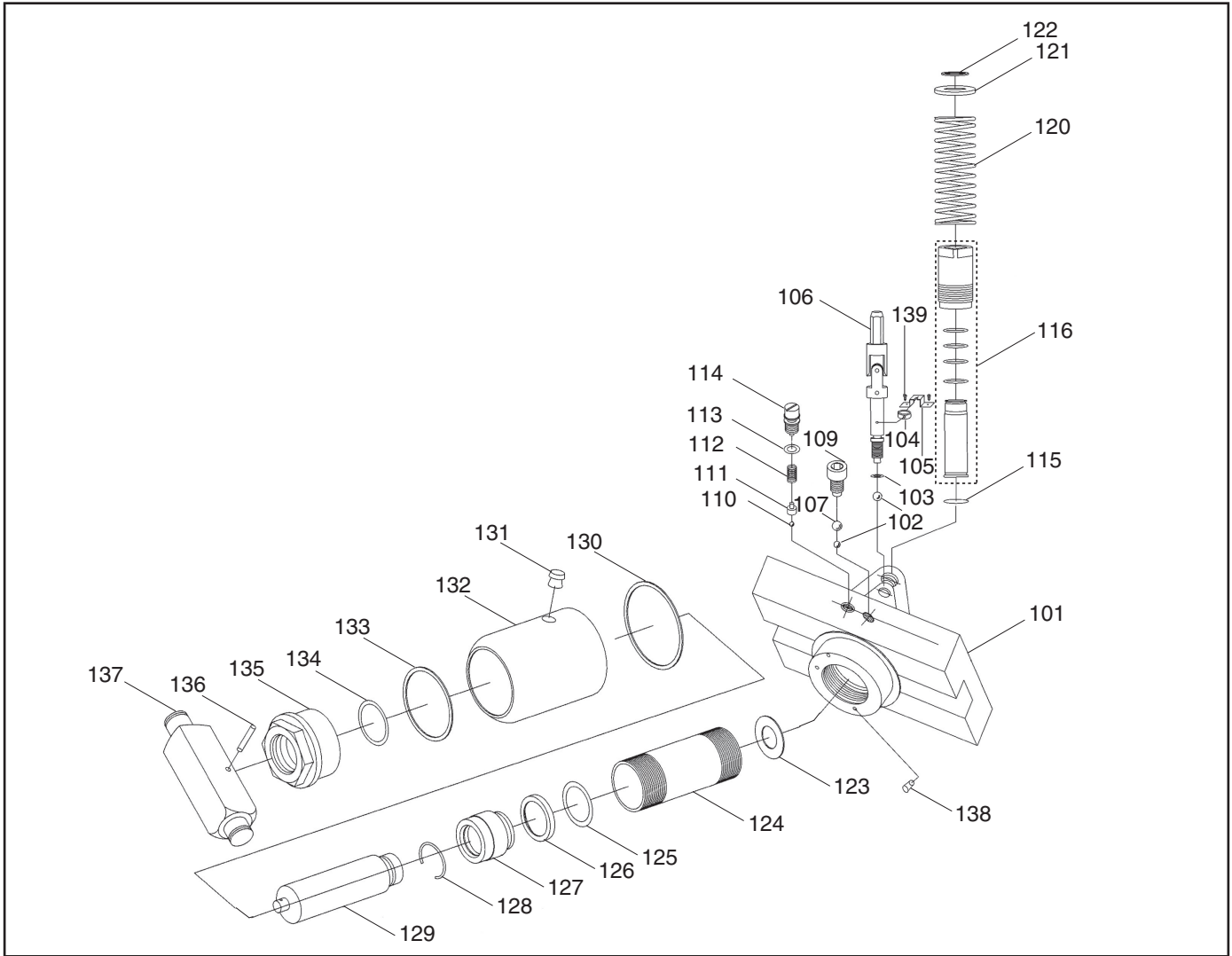
| REF | PART # | DESCRIPTION |
|-----|------------|--------------------------|
| 23 | PW04M | FLAT WASHER 10MM |
| 24 | PT10035024 | SCREW BUSHING |
| 25 | PT10035025 | LINKAGE SCREW |
| 26 | PT10035026 | STRENGTHEN ROD |
| 27 | PR18M | EXT RETAINING RING 17MM |
| 28 | PT10035028 | HANDLE YOKE AXIS PIN |
| 29 | PT10035029 | PRESS WHEEL SHAFT |
| 30 | PT10035030 | BRACKET |
| 31 | PT10035031 | PRESS ROLL |
| 32 | PEC03M | E-CLIP 10MM |
| 33 | PT10035033 | KNURLED THUMB SCREW |
| 34 | PRP37M | ROLL PIN 3 X 14 |
| 35 | PT10035035 | HANDLE SOCKET |
| 36 | PT10035036 | EYEBOLT M6-1 X 40 |
| 37 | PT10035037 | EXTENSION SPRING |
| 39 | PN01M | HEX NUT M6-1 |
| 40 | PT10035040 | HYDRAULIC UNIT |
| 41 | PFB25M | FLANGE BOLT M8-1.25 X 25 |
| 42 | PT10035042 | SPONGE SLEEVE |
| 43 | PT10035043 | LOWER HANDLE |
| 44 | PT10035044 | UPPER HANDLE |
| 45 | PT10035045 | MACHINE ID LABEL |

T10036 Main Parts List

| REF | PART # | DESCRIPTION |
|-----|------------|-------------------------|
| 1 | PT10036001 | SADDLE AXIS |
| 2 | PT10036002 | SADDLE |
| 3 | PT10036003 | LIFTING ARM ASSEMBLY |
| 5 | PT10036005 | LINK ROD |
| 6 | PR06M | EXT RETAINING RING 16MM |
| 7 | PT10036007 | FRONT WHEEL AXIS |
| 8 | PT10036008 | FRONT WHEEL |
| 9 | PT10036009 | RIGHT WALL PLATE |
| 10 | PT10036010 | FRONT WHEEL SLEEVE |
| 11 | PW06M | FLAT WASHER 12MM |
| 12 | PLW05M | LOCK WASHER 12MM |
| 13 | PN09M | HEX NUT M12-1.75 |
| 14 | PT10036014 | SIDE HANDLE |
| 15 | PT10036015 | REAR CASTER BRACKET |
| 16 | PT10036016 | REAR CASTER ASSEMBLY |
| 17 | PT10036017 | LIMITATION ROD |
| 18 | PT10036018 | SOCKET SHAFT |
| 19 | PT10036019 | HANDLE SOCKET |
| 20 | PT10036020 | PRESS WHEEL SHAFT |
| 21 | PT10036021 | PRESS ROLL |
| 22 | PT10036022 | KNURLED THUMB SCREW |
| 23 | PRP37M | ROLL PIN 3 X 14 |

| REF | PART # | DESCRIPTION |
|-----|------------|--------------------------------|
| 24 | PT10036024 | LEFT WALL PLATE |
| 25 | PT10036025 | COTTER PIN 4 X 50 |
| 26 | PT10036026 | HYDRAULIC UNIT |
| 27 | PT10036027 | UPPER HANDLE |
| 28 | PT10036028 | LOWER HANDLE |
| 29 | PT10036029 | EXTENSION SPRING |
| 30 | PT10036030 | EYEBOLT M6-1 X 25 |
| 31 | PN01M | HEX NUT M6-1 |
| 32 | PFB26M | FLANGE BOLT M10-1.5 X 25 |
| 33 | PTLW16M | INT TOOTH WASHER 10MM |
| 34 | PFB18M | FLANGE BOLT M8-1.25 X 20 |
| 35 | PTLW03M | INT TOOTH WASHER 8MM |
| 36 | PFH60M | FLAT HD ALLEN SCR M8-1.25 X 20 |
| 37 | PW04M | FLAT WASHER 10MM |
| 38 | PT10036038 | RUBBER PROTECTIVE |
| 39 | PT10036039 | LINK BOLT |
| 40 | PR09M | EXT RETAINING RING 20MM |
| 41 | PLN09M | LOCK NUT M12-1.75 |
| 42 | PR03M | EXT RETAINING RING 12MM |
| 43 | PT10036043 | RAM LINK |
| 44 | PT10036044 | MACHINE ID LABEL |

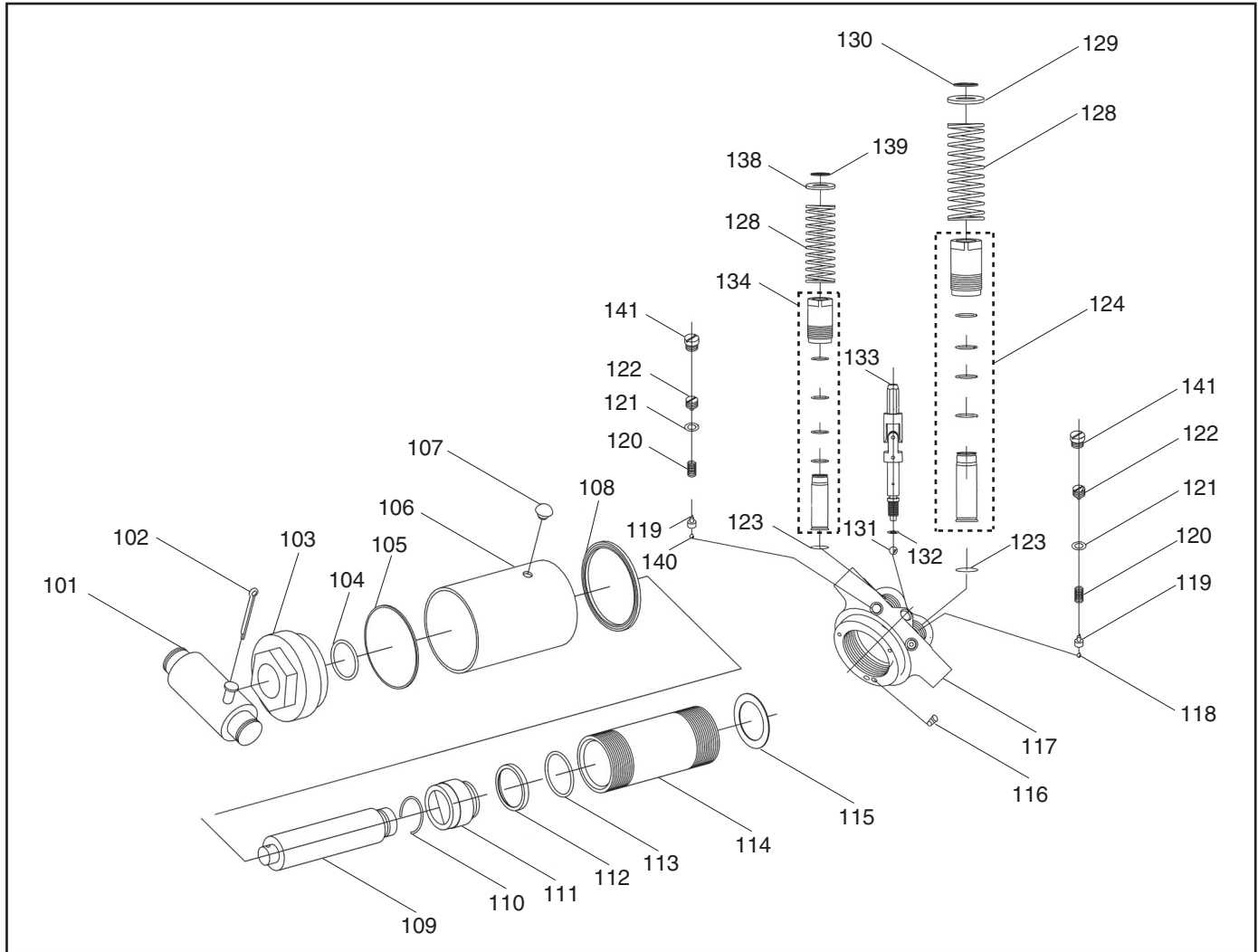
T10035 Hydraulic Pump Parts Breakdown



| REF | PART # | DESCRIPTION |
|-----|------------|----------------------------|
| 101 | PT10035101 | BASE |
| 102 | PT10035102 | STEEL BALL 6 |
| 103 | PORP006 | O-RING 5.8 X 1.9 P6 |
| 104 | PT10035104 | COLLAR |
| 105 | PT10035105 | COLLAR PIECE |
| 106 | PT10035106 | RELEASE VALVE ASSEMBLY |
| 107 | PT10035107 | STEEL BALL 8 |
| 109 | PT10035109 | SPECIAL SCREW M10-1.5 X 30 |
| 110 | PT10035110 | STEEL BALL 4 |
| 111 | PT10035111 | BALL HOUSING |
| 112 | PT10035112 | ADJUSTABLE SPRING |
| 113 | PORP008 | O-RING 7.8 X 1.9 P8 |
| 114 | PT10035114 | SPECIAL SCREW M10-1 X 4 |
| 115 | PW27MM | FLAT WASHER 17MM |
| 116 | PT10035116 | PISTON ASSEMBLY |
| 120 | PT10035120 | COMPRESSION SPRING |
| 121 | PT10035121 | PISTON COVER |
| 122 | PR05M | EXT RETAINING RING 15MM |

| REF | PART # | DESCRIPTION |
|-----|------------|-------------------------|
| 123 | PW26MM | FLAT WASHER 22MM |
| 124 | PT10035124 | CYLINDER |
| 125 | PORP022-4 | O-RING 22.1 X 3.5 P22.4 |
| 126 | PT10035126 | CUP PACKING |
| 127 | PT10035127 | VALVE |
| 128 | PT10035128 | C-CLIP 20MM |
| 129 | PT10035129 | HYDRAULIC RAM |
| 130 | PT10035130 | SEAL |
| 131 | PT10035131 | PLUNGER CAP |
| 132 | PT10035132 | OIL TANK |
| 133 | PT10035133 | SEAL |
| 134 | POR0022 | O-RING 22.4 X 3.1 |
| 135 | PT10035135 | TOP NUT |
| 136 | PRP56M | ROLL PIN 4 X 25 |
| 137 | PT10035137 | BLOCK LINKAGE |
| 138 | PT10035138 | FILTER SCREEN |
| 139 | PS19M | PHLP HD SCR M5-.8 X 6 |

T10036 Hydraulic Pump Parts Breakdown



| REF | PART # | DESCRIPTION |
|-----|------------|-------------------------|
| 101 | PT10036101 | BLOCK LINKAGE |
| 102 | PT10036102 | COTTER PIN |
| 103 | PT10036103 | TOP NUT |
| 104 | PORP029-5 | O-RING 29.2 X 3.5 P29.5 |
| 105 | PT10036105 | SEAL |
| 106 | PT10036106 | OIL TANK |
| 107 | PT10036107 | PLUNGER CAP |
| 108 | PT10036108 | SEAL |
| 109 | PT10036109 | HYDRAULIC RAM |
| 110 | PT10035128 | C-CLIP 20MM |
| 111 | PT10036111 | VALVE |
| 112 | PT10036112 | CUP PACKING |
| 113 | PORP028 | O-RING 27.7 X 3.5 P28 |
| 114 | PT10036114 | CYLINDER |
| 115 | PW25MM | FLAT WASHER 24MM |
| 116 | PT10036116 | FILTER SCREEN |
| 117 | PT10036117 | BASE |
| 118 | PT10036118 | STEEL BALL 4 |

| REF | PART # | DESCRIPTION |
|-----|------------|-------------------------|
| 119 | PT10036119 | BALL PLUNGER |
| 120 | PT10036120 | ADJUSTABLE SPRING |
| 121 | PORP007 | O-RING 6.8 X 1.9 P7 |
| 122 | PT10036122 | SPECIAL SCREW |
| 123 | PT10036123 | SPECIAL WASHER 9MM |
| 124 | PT10036124 | LARGE PISTON ASSEMBLY |
| 128 | PT10036128 | COMPRESSION SPRING |
| 129 | PT10036129 | LARGE PISTON COVER |
| 130 | PRO9M | EXT RETAINING RING 20MM |
| 131 | PT10036131 | STEEL BALL 6 |
| 132 | POR0063 | O-RING 6.6 X 3 |
| 133 | PT10036133 | RELEASE VALVE ASSEMBLY |
| 134 | PT10036134 | SMALL PISTON ASSEMBLY |
| 138 | PT10036138 | SMALL PISTON COVER |
| 139 | PRO6M | EXT RETAINING RING 16MM |
| 140 | PT10036140 | STEEL BALL 5.5 |
| 141 | PT10036141 | SPECIAL SCREW |

grizzly.com

TOOL WEBSITE

Buy Direct and Save with Grizzly® – Trusted, Proven and a Great Value!

*Visit Our Website Today And Discover
Why Grizzly® Is The Industry Leader!*

- SECURE ORDERING
- ORDERS SHIPPED WITHIN 24 HOURS
- E-MAIL RESPONSE WITHIN ONE HOUR

-OR-

Call Today For A **FREE**
Full Color Catalog

1-800-523-4777

